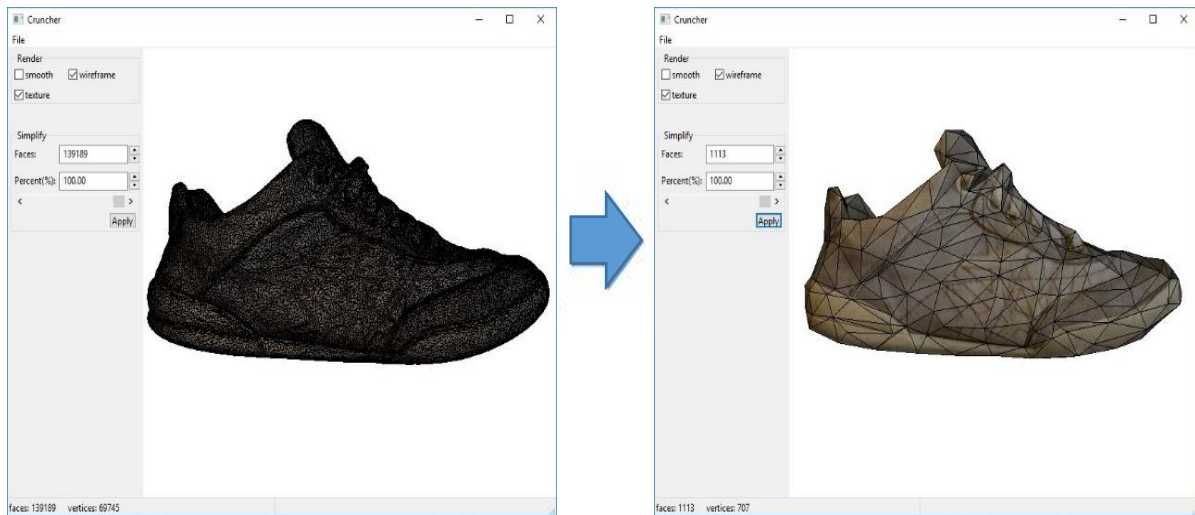


Simplify Polygon Tool- GUI

Version 1.0



Installation Guide

Contents

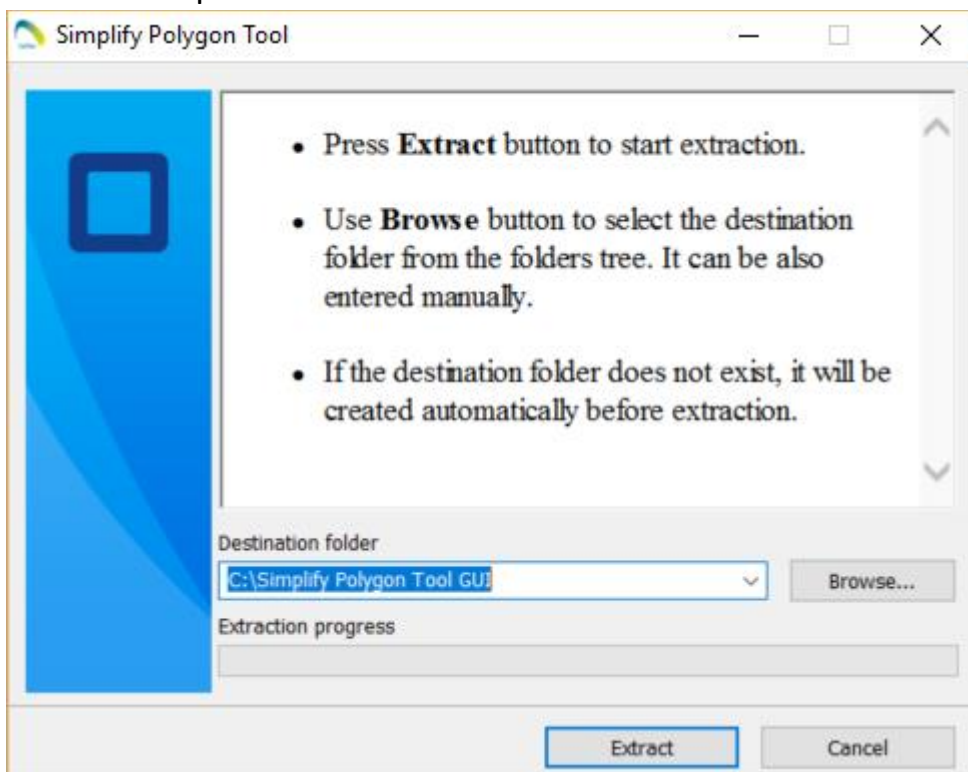
1. Overview
2. Installation Steps
3. Support

1. Overview

Simplify Polygon Tool simplifies the mesh in the given .obj file. This tool is easy to use and the GUI is clean and easy to understand. The only parameter needed is either the target number of remaining triangles or percentage to retain. The user does not need to set any trade-off between texture and geometry fidelity. The simplified model is guaranteed to be seamless free automatically.

2. Installation Steps

1. Once the product is purchased, user will receive an email with a download link that downloads the file “SimplifyPolygonGUI.exe” and an activation key.
2. Please double click the file “SimplifyPolygonGUI.exe” and the following screen will open.

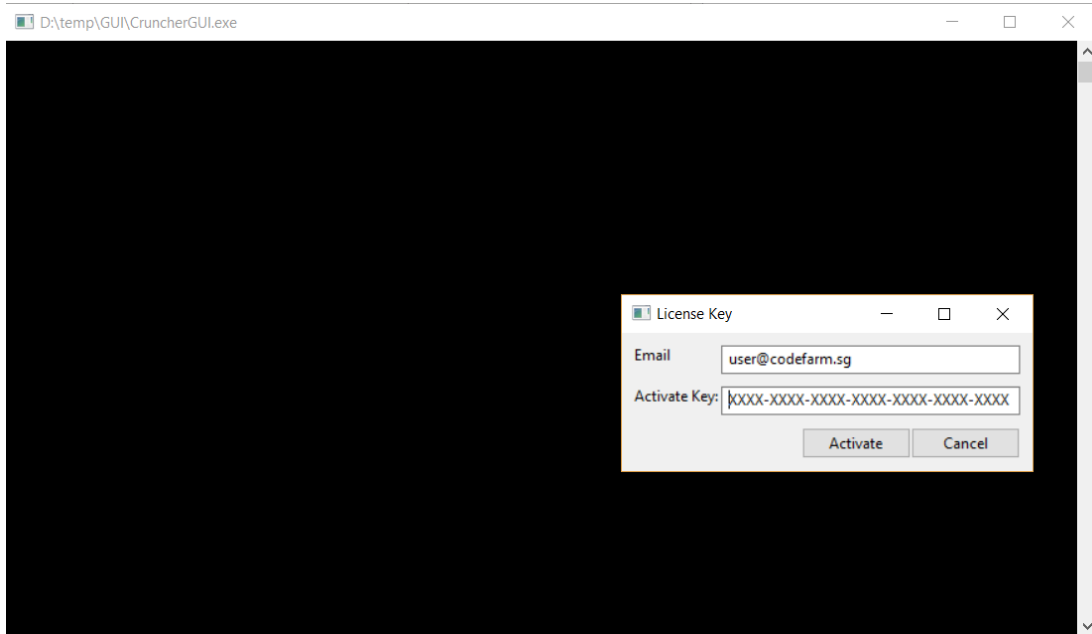


3. Extract to the convenient location that have read and write permission.
4. The following files will be extracted.

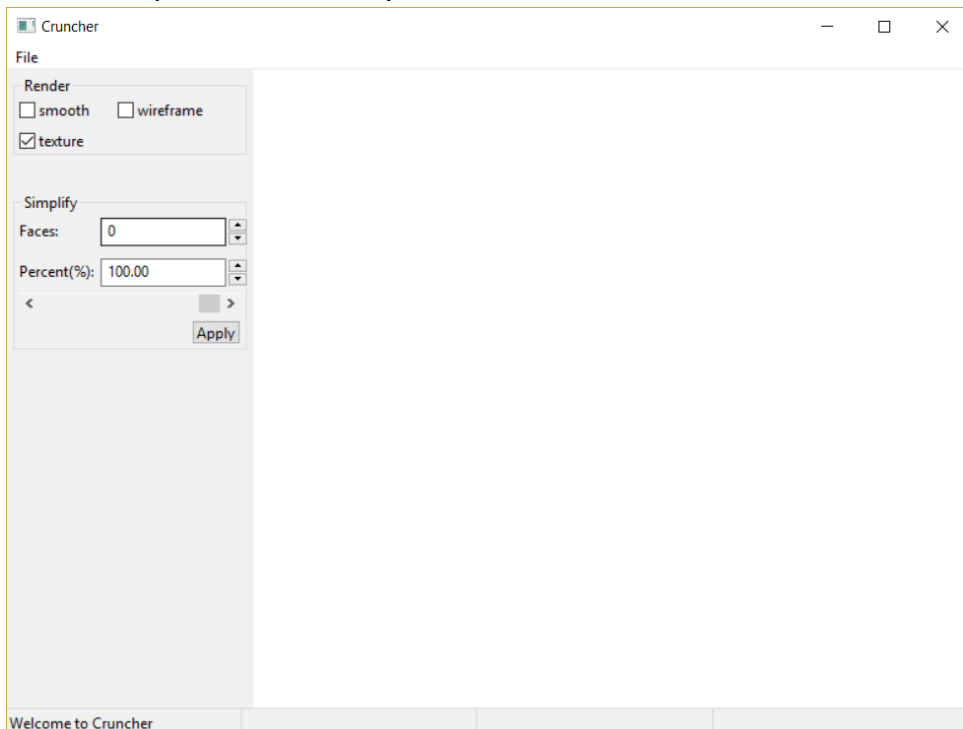
This PC > STORAGE (SSD) (D:) > temp > temp

Name	Date modified	Type	Size
cpprest140_2_9.dll	2/11/2016 5:13 PM	Application extens...	5,839 KB
CruncherCMD	6/12/2018 11:45 A...	Application	4,821 KB
CruncherCMDInput	6/12/2018 11:45 A...	Application	4,830 KB
opencr.dll	6/12/2018 3:56 PM	Application extens...	1 KB
opencv.dll	6/12/2018 3:56 PM	Application extens...	1 KB

5. Now, please enter the email and the activation key provided through the email in the below window.



6. Now, the product is ready to use as below.



3. Support

Website: <https://www.codefarm.sg>

Email: contact@codefarm.sg